



Philips Domestic Appliances and Personal Care

Service Manual

PRODUCT INFORMATION

- This product meets the requirements regarding interference suppression on radio and TV.
- After the product has been repaired, it should function properly and has to meet the safety requirements as officially laid down at this moment.

TECHNICAL INFORMATION

- Colour : Pearl Silver
- Power consumption : 1800 W
(IEC) 230V
- Maximum Air displacement : 37 l/s
- Vacuum : 285 mbar / 28.5 kPa
- Duststorage capacity : 2 L
- Cord length : 9 m
- Filter system : HEPA cyclone-filtration
auto-clean system
: Permanent motor
protection filter
: Super Clean Air
HEPA12 exhaust filter
- Dimensions of cleaner : 470 x 320 x 340 mm
- Dimensions of packaging : 590 x 390 x 380 mm
- Net weight : 7.2 kg

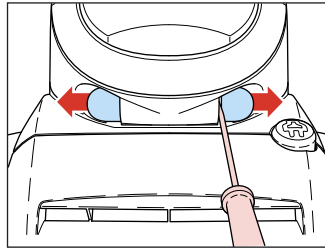
ACCESSORIES

- Nozzle : Tri-Active all purpose nozzle
- Tubes : Metal lacquered telescopic tubes
- Accessories : Brush, crevice nozzle and small nozzle
- Accessory storage : Active accessory storage bridge in handgrip
- Coupling : Button coupling

OPTIONAL (accessories)

- FC 8031 : Super Clean Air HEPA filter, HEPA12 exhaust filter

- To open the appliance, first remove the filter cover (item 33).
- Then remove the hinge; first remove the end caps (item 17) this can be done with a screwdriver, see picture.



When the end caps are removed, the hinging pin can be removed and the hinge can be taken off the appliance.

- Remove the can with the filters.
- Now remove the drive coupling (item 13) by **turning it clockwise**.
- To remove the housing (10 screws), for some screws you will require a screwdriver with 14.5 cm long shank. Screwdriver 4322 009 08490 for T15 can be used.
- When the repair is finished, check whether all functions of the appliance work properly.
- To disassemble the cord winder, use TORX screwdriver no. T10, which is one of a set consisting of T20; T15; T10; T9; T8; T7 and T6 (code number 4822 395 50145)

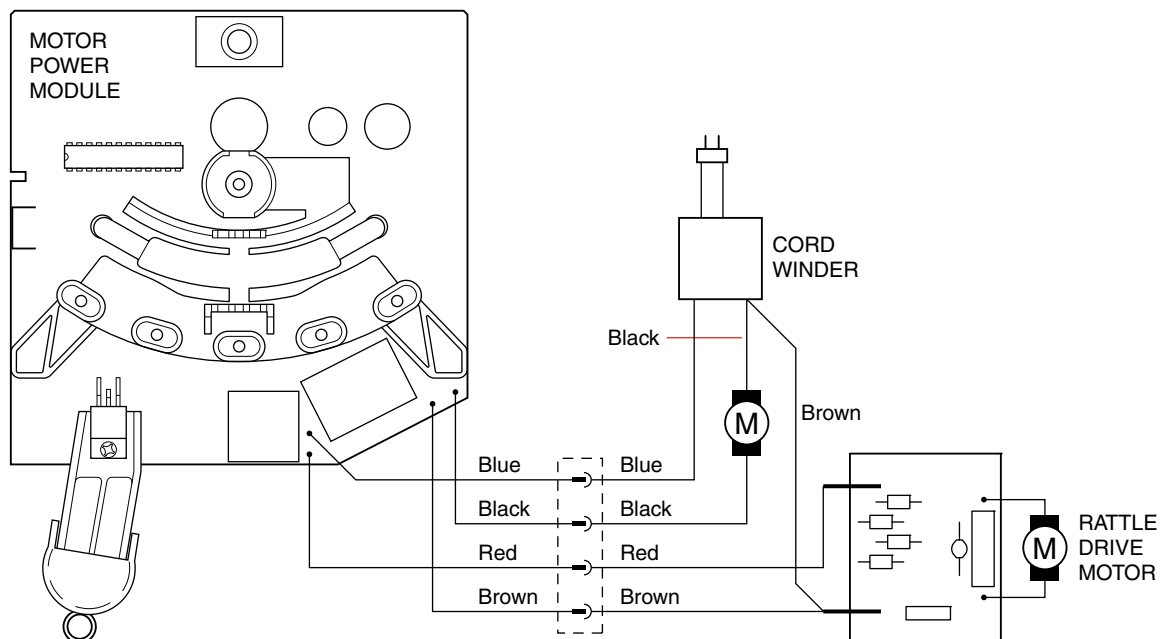
Further disassembly advise for the hinge:

- First remove the 2 screws (A) underneath the handle to remove the hinge back (item 2)
- The user panel can be removed after removing the screw (B) in the middle of the hinge on the inside.
- PCB can be removed.
- Choke valve can be taken out.
- To remove the sealing disk and the detector with the spring you have to remove the 2 screws (C) next to the sealing disk.

REPAIR INSTRUCTION

- Due to precisely pre-adjusted belt-tension, rattle drive unit (item 27) may only be replaced as a complete unit.
Do not disassemble this unit in any way!
- If the reel half spring unit is replaced, shaft (K) must be lubricated with silicone grease. Do not apply any silicone grease to or spill any grease on terminals (item 50) or conductors (item 51).
- The cord winder spring must be tensioned to the maximum level and the be rewound approx 1.5 turn.
- Item 9, air valve, opens to cool the motor if the air displacement is too low or if the airflow is blocked.
- Filter detection problems in appliances from before WK728 can be solved by replacing the Detector (pos. 12) as well as the Hinge (pos. 10) and the Sealing disk (pos. 66).

ELECTRICAL DIAGRAM



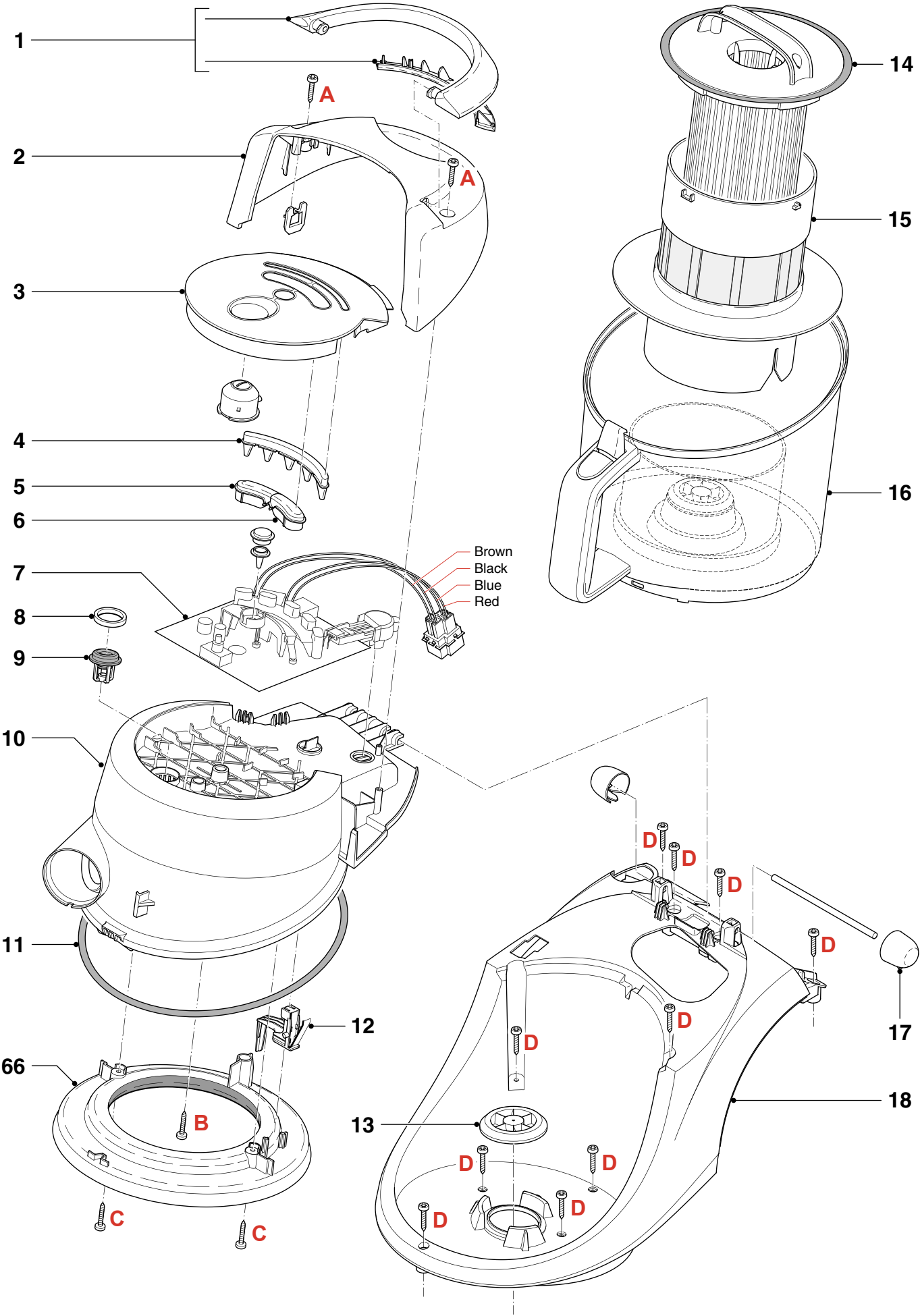
| Pos | Service code | Description |
|-----|------------------------|-------------------------------------------|
| 1 | 4322 009 09650 | Handle assy Silver pearl |
| 2 | 4322 005 20400 | Hinge back Silver Pearl |
| 3 | 4322 005 20280 | User Panel PR assy |
| 4 | 4322 003 27010 | Light Guide |
| 5 | 4322 005 19710 | Button left Sparkling Silver |
| 6 | 4322 005 20650 | Button right Sparkling Silver |
| 7 | 4322 006 23250 | PCB 220-240V 50/60Hz |
| 8 | 4322 003 28120 | Choke valve cap |
| 9 | 4322 005 19690 | Choke valve |
| 10 | Not available * | Hinge front Silver Pearl <wk728 |
| | 4322 005 23040 | Hinge front Silver Pearl |
| 11 | 4322 001 73370 | Bucket sealing |
| 12 | Not available * | Detector assy <wk728 |
| | 4322 005 23030 | Detector assy |
| 13 | 4322 005 19600 | Drive coupling |
| 14 | 4322 005 19650 | Permanent rattle filter assy |
| 15 | 4322 003 26980 | Tower assy Bright Lime |
| 16 | 4322 005 20980 | Bucket assy Silver Pearl |
| 17 | 4322 003 25310 | End caps s. grey |
| 18 | 4322 005 20350 | Upper housing Silver Pearl |
| 19 | 4322 000 38800 | Motor inlet filter |
| 20 | 4322 003 27060 | Inlet sealing air channel |
| 21 | 4322 003 26870 | Air channel Dark Raven |
| 22 | 4322 000 09750 | Pedal spring |
| 23 | 4322 006 07540 | Wire Beam Assy |
| 24 | 4322 001 73550 | Rubber bump |
| 25 | 4322 003 27620 | Backpanel Dark Raven |
| 26 | 4322 003 28920 | PCB Lock |
| 27 | 4322 005 19570 | Rattle drive unit assy |
| 28 | 4322 003 25000 | Bumper grey |
| 29 | 4322 003 26890 | Bucket hook left Dark Raven |
| 30 | 4322 003 26900 | Bucket hook right Dark Raven |

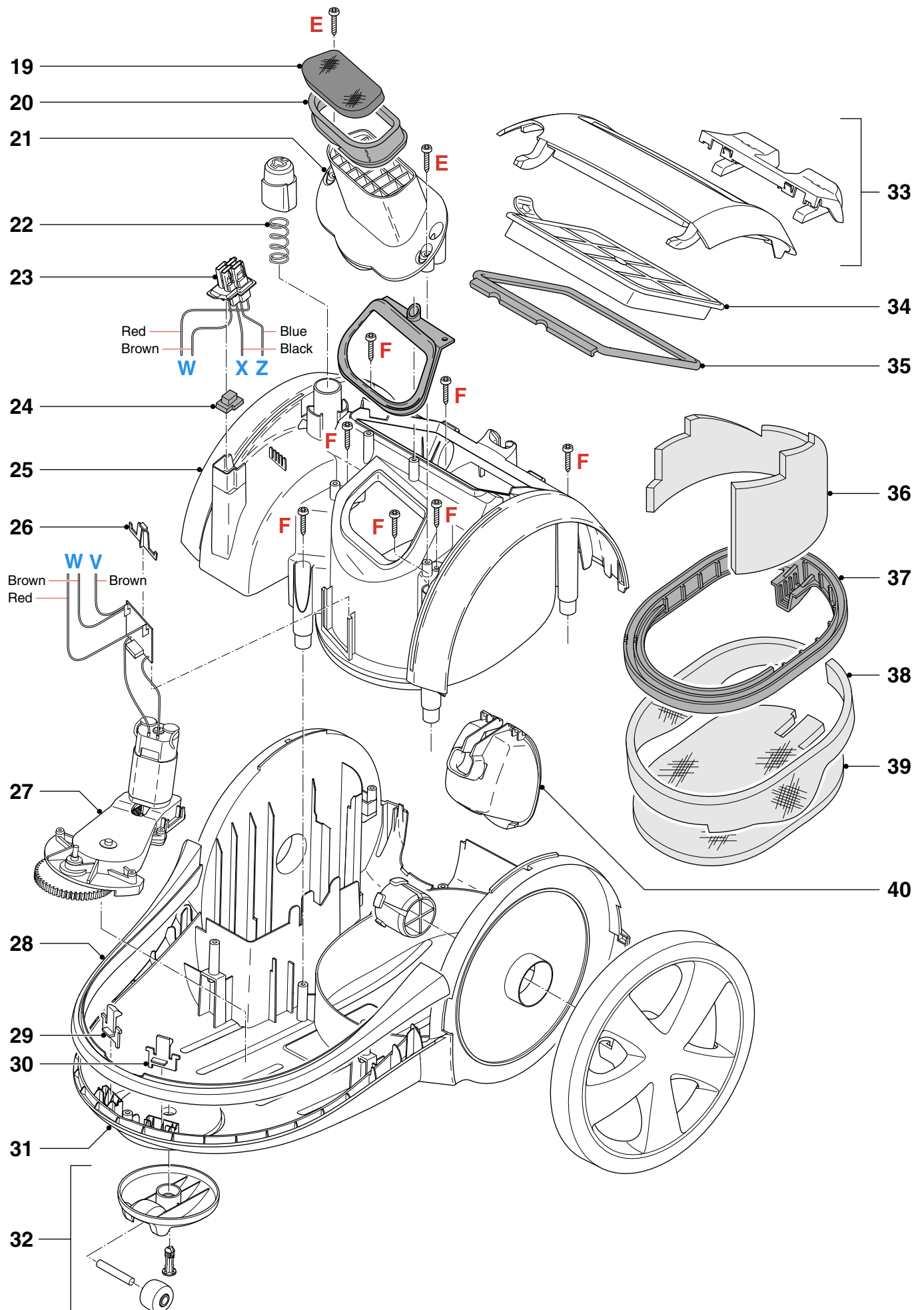
* If one of these parts of an appliance from before WK728 must be replaced, all pos. 10,12 and 66 must be replaced!

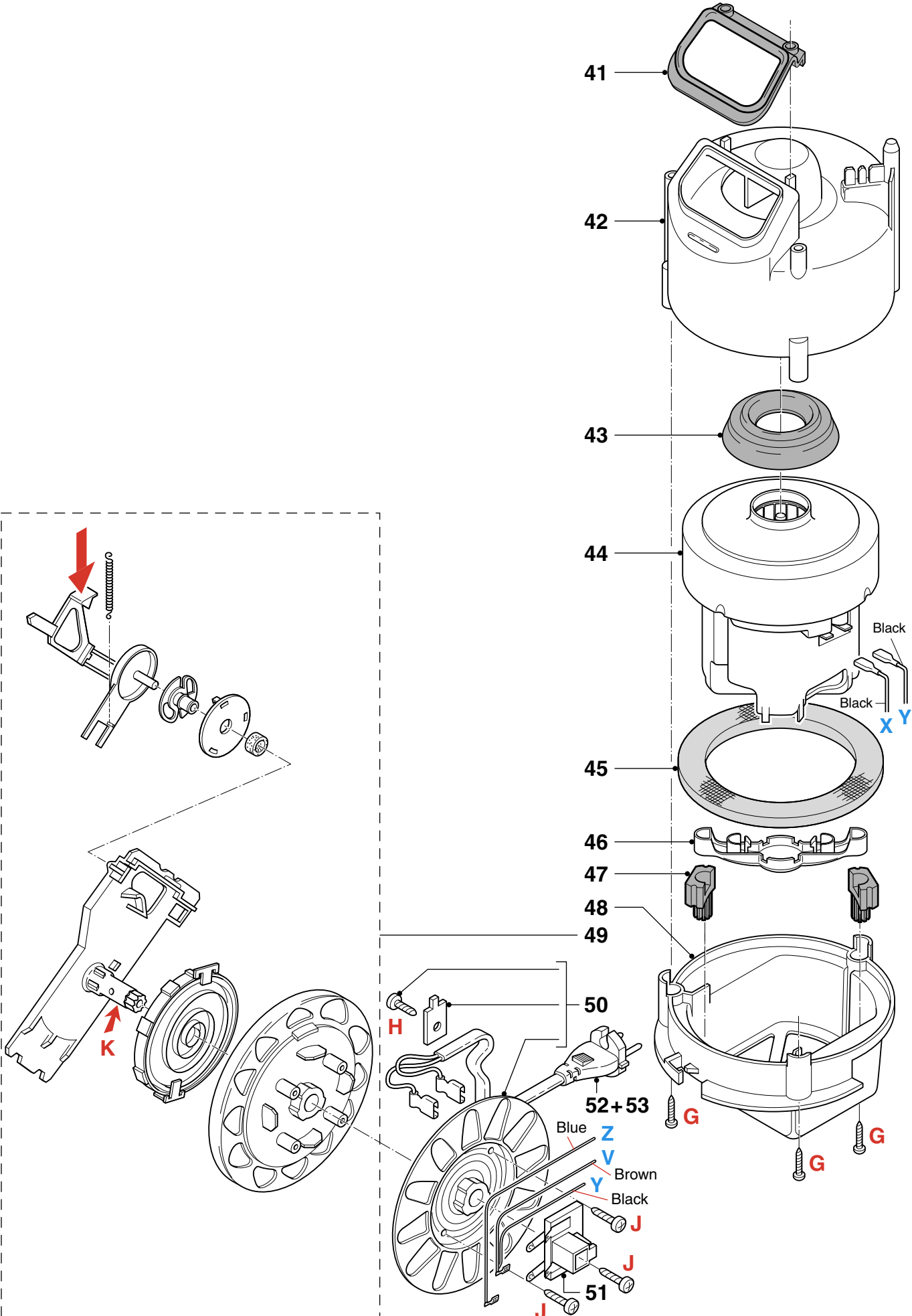
| Pos | Service code | Description |
|-----|------------------------|-------------------------------------|
| 31 | 4322 003 27560 | Lower housing Dark Raven |
| 32 | 4322 005 17510 | Caster assy |
| 33 | 4322 005 21010 | Filter cover assy Silver Pearl |
| 34 | 4322 004 92920 | Hepa filter phoenix |
| 35 | 4322 001 73460 | Exhaust sealing |
| 36 | 4322 000 38790 | Silencer 4 wall backpanel |
| 37 | 4322 003 25460 | S-Class h. sealing |
| 38 | 4322 000 38670 | Silencer 1 wall |
| 39 | 4322 000 38770 | Silencer 2 bottom |
| 40 | 4322 003 27610 | Cord Outlet Dark Raven |
| 41 | 4322 003 25390 | Inlet sealing 1 |
| 42 | 4322 003 27580 | Motor housing top Dark Raven |
| 43 | 4322 001 73440 | Motor buffer front |
| 44 | 4322 009 09430 | Motor 1761 220-240V Domel |
| 45 | 4322 000 38820 | Silencer 3 compas |
| 46 | 4322 003 26030 | Motor bracket |
| 47 | 4322 001 73520 | Motor buffer back green |
| 48 | 4322 003 25370 | Motor housing bottom |
| 49 | 4322 005 18670 | Reel half spring unit |
| 50 | 4322 005 17430 | Reelh. cordside assy |
| 51 | 4322 005 17910 | Contact plate assy |
| 52 | 4322 006 07410 | Cordset UK/HK L = 9.3 m |
| 53 | 4322 006 07390 | Cordset Euro 4.8mm L = 9.3 m |
| 54 | 4322 003 25510 | Curve bend a1 |
| 55 | 4322 004 20090 | Conical hose assy |
| 56 | 4322 005 19820 | Curve bend/hose assy |
| 57 | 4322 007 31640 | Leaf spring assy |
| 58 | 4322 004 22510 | Telescopic tube silver |
| 59 | 4322 001 99120 | Coupling bush |
| 60 | 4322 007 45550 | Coupling spring |
| 61 | 4341 004 20510 | Plumeau assy |
| 62 | 4322 003 25560 | Crevice nozzle 140 mm |
| 63 | 4322 005 17590 | Accessory bridge assy |
| 64 | 4341 004 20490 | Small nozzle |
| 65 | 4322 004 23260 | Tri-active nozzle |
| 66 | Not available * | Sealing Disk White <wk728 |
| | 4322 003 27140 | Sealing Disk White |

EXPLODED VIEW

FC9222







EXPLODED VIEW

FC9222

